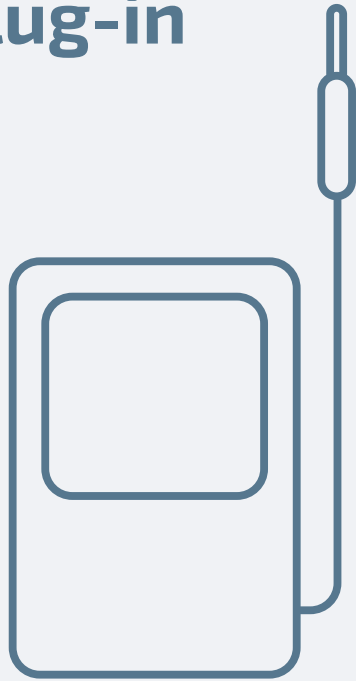


ADMINISTRATION

Flexlock Plug-in



Flexlock Plug-in is a simple system that takes advantage of central administration and data stored in the cloud.

The function and rights of the locks are changed in the cloud and is transferred via a programming box to the locks. The locks are updated manually through the programming box that is connected with cable to each lock.

This is how the Flexlock Plug-in works:

- Operated as a secure cloud service and administered via a web browser.
- Provides easy handling and a good overview of locks and users.
- User cards are securely loaded via our Plug-in reader.
- The user manages the locks with RFID card or tag.
- The system stores battery status and simple lock history.
- Easy and safe to administer for in example a lost user card.
- The lock is flexible, wireless and battery powered.
- Existing locks, Invisible / Visible Mifare 13.56 MHz, can easily be upgraded to Flexlock Plug-in.
- The system complies with current GDPR legislation.



Flexlock Plug-in is easy to install and requires minimal education. Plug-in is a cost effective and simple system that ensures a structured administration to your locks. This solution is sold as "software as a service" (SAAS) and signed with an agreement. The agreement also includes Service Level Agreement (SLA) and Personal Assistance Agreement (PUB).

Flexlock Plug-in



Plug-in Programmer

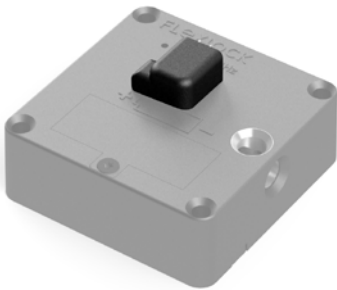
When using the administration Plug-in this device is needed to transfer information between the Admin Cloud and the locks. When connecting the device to a computer via USB, it synchronizes with the cloud where the information is stored. Then connect each lock to the programmer and simple push of a button to get the update. Cables for connection to lock (Flexlock Invisible) and computer are included.

To connect the device to a Visible lock, you also need a Plug-in Adapter cable Visible



Plug-in Reader

When using the administration Plug-in this device is needed to upload the user cards into the Admin Cloud. This Plug-in Reader is used to upload the user cards correctly to the cloud. The device connects to a computer via USB. When a user card is placed on the device, the card's unique ID number is read into the system.



Plug-in Adapter

To be able to use the Flexlock Plug-in administration, your Invisible lock needs to be equipped with a plug-in adapter. The adapter enables connection with the Plug-in programmer device that transfer information between the locks and the cloud. The adapter can be purchased together with the lock or retrofitted later.



Plug-in Activation card

This card is used to activate plug-in mode on the lock. When the lock is set to this position, it means that the lock only accept configuration and user changes via the administration solution Plug-in and its Programmer unit. Opening and closing the lock with card still works.

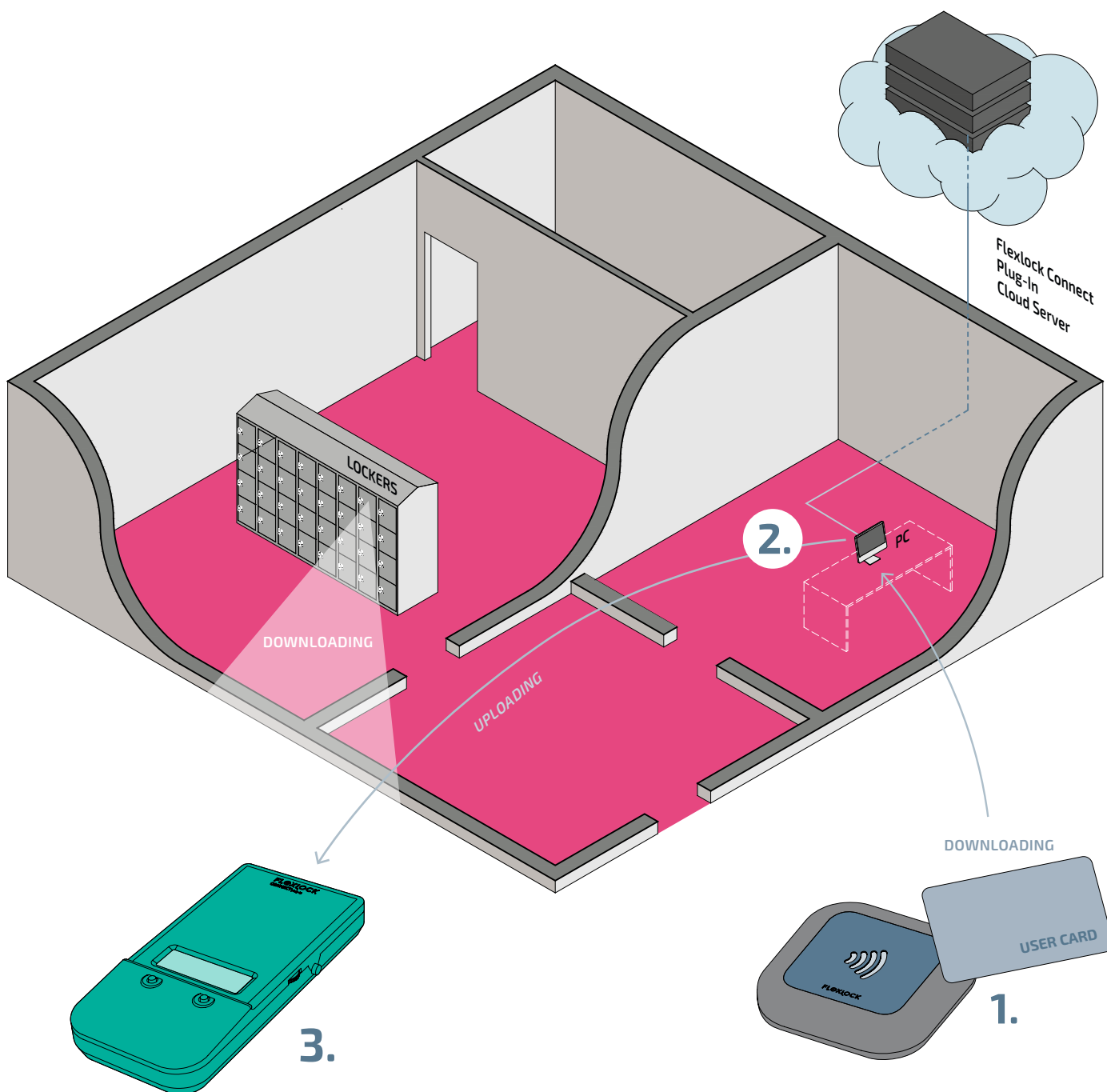


Plug-in Adapter cable Visible

When using the administration Plug-in the Plug-in Programmer is needed to transfer information between the Admin Cloud and the locks. To be able to connect the device to a Flexlock Visible, this adapter cable is required.

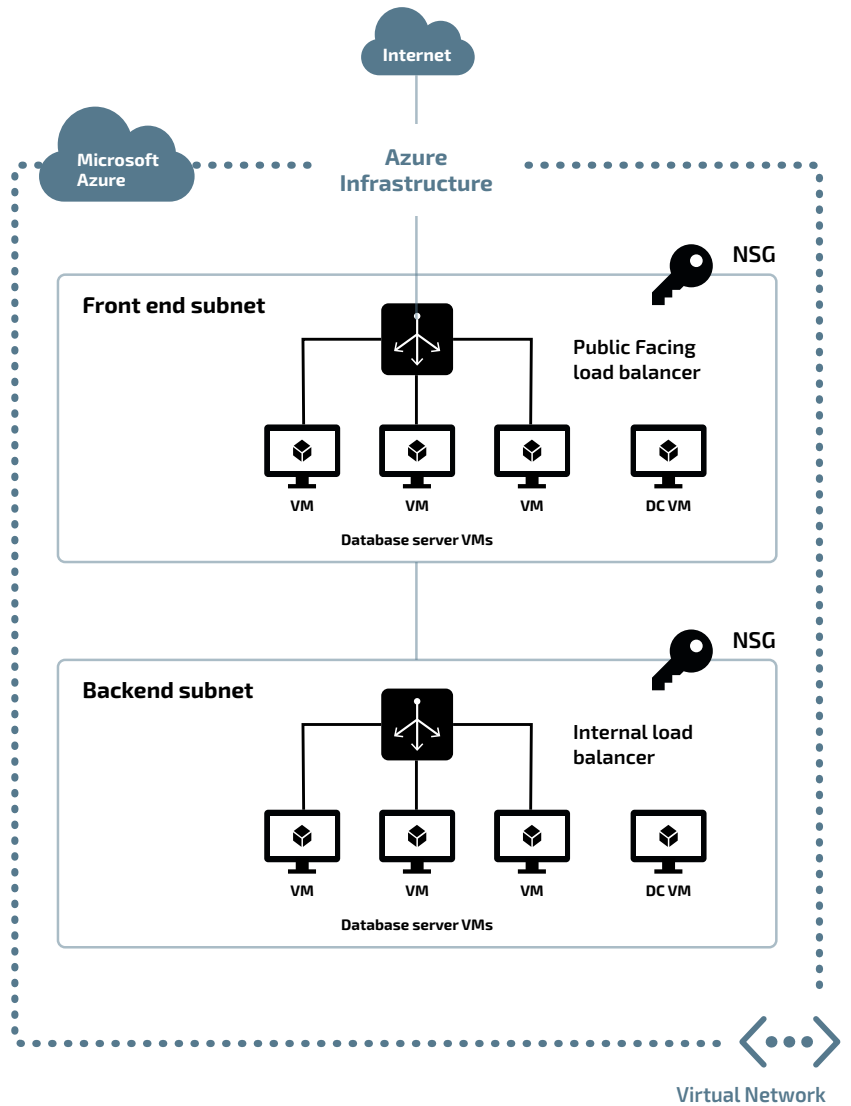
Overview

1. Connect the Plug-in Reader to the computer via USB. Load user cards on the device and read its unique ID number to the cloud.
2. Computer with cloud service for administration of locks and users and application for synchronizing Plug-in programmer.
3. Plug-In Programmer is connected to the computer via USB. The device synchronizes with the cloud and saves the updated settings and user data. When connecting Plug-in Programmer to the lock it will be reprogrammed with the updates..



Admin Cloud

- The cloud runs on a safe Microsoft Azure Web Server
- Secure with own customer login
- Own web administration with control and installation of administrators and facility managers.
- Compatible browsers; Chrome or Microsoft Edge



FLEXLOCK PLUG-IN

Technical specifications

FUNCTIONALITY

- Admin up to 10 000 users
- Manage group and group assignments
- Locks in Mode 1-5
- Sound on/off
- LED on/off
- Max 200 users/lock
- Possible history tracking, last 5 event
- Battery status
- Use of locks with your unique Service and Programming Card
- Card management disabled at lock, only web admin
- Activation with Connect Plug-In activation card
- GDPR compliant